

WinFast Digital TV Card

QUICK INSTALLATION GUIDE



We Make Dreams a Reality

Leadtek Research Inc.

CODE: LR 66xx
P/N: W05G0060
Ver: B

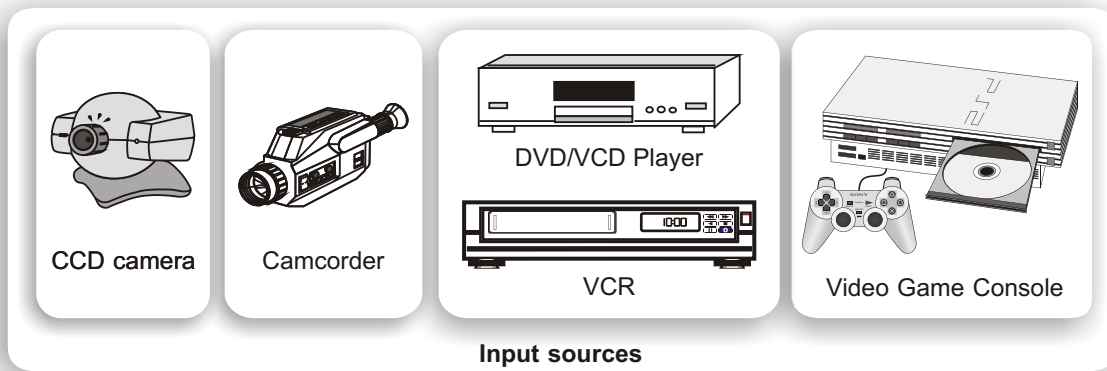
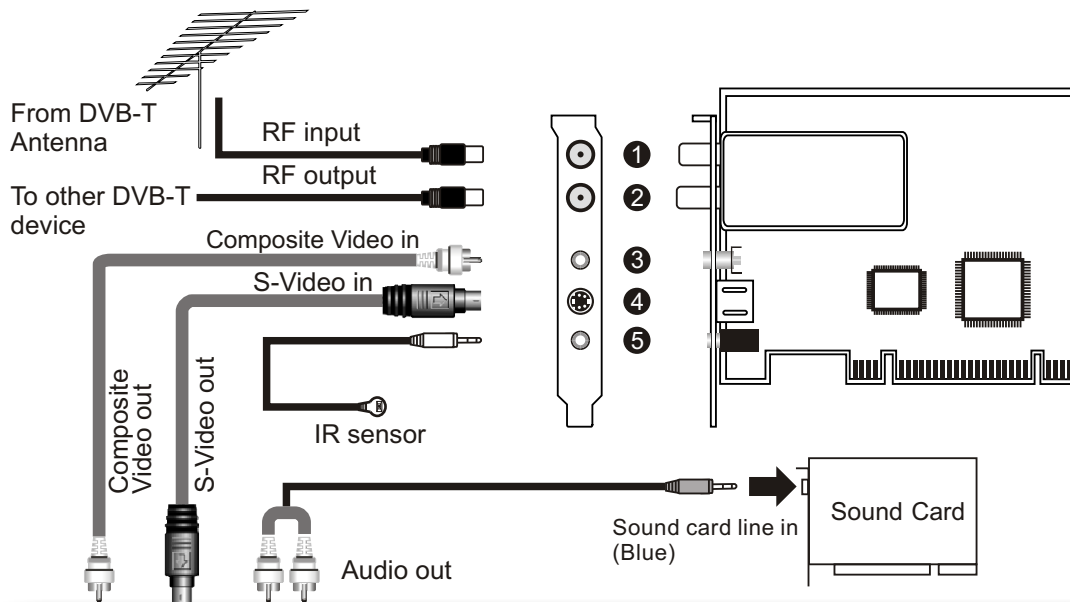
Table of Contents

Connect Input & Output Devices	1
Board Layout	2
Hardware Installation	4
Driver & Application Installation	5
Recycling Information	8

Connect Input & Output Devices


DTV1000 T

- ① RF input
- ② RF output
- ③ Composite Video input
- ④ S-Video input
- ⑤ IR sensor connector



Note:

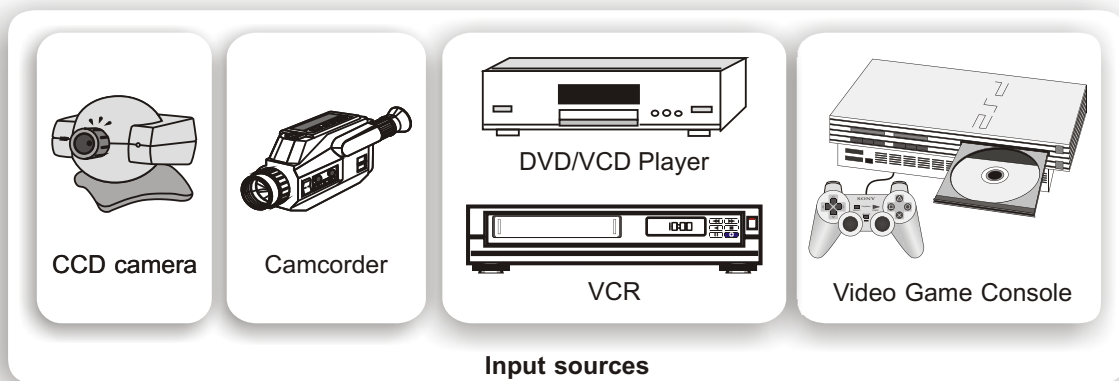
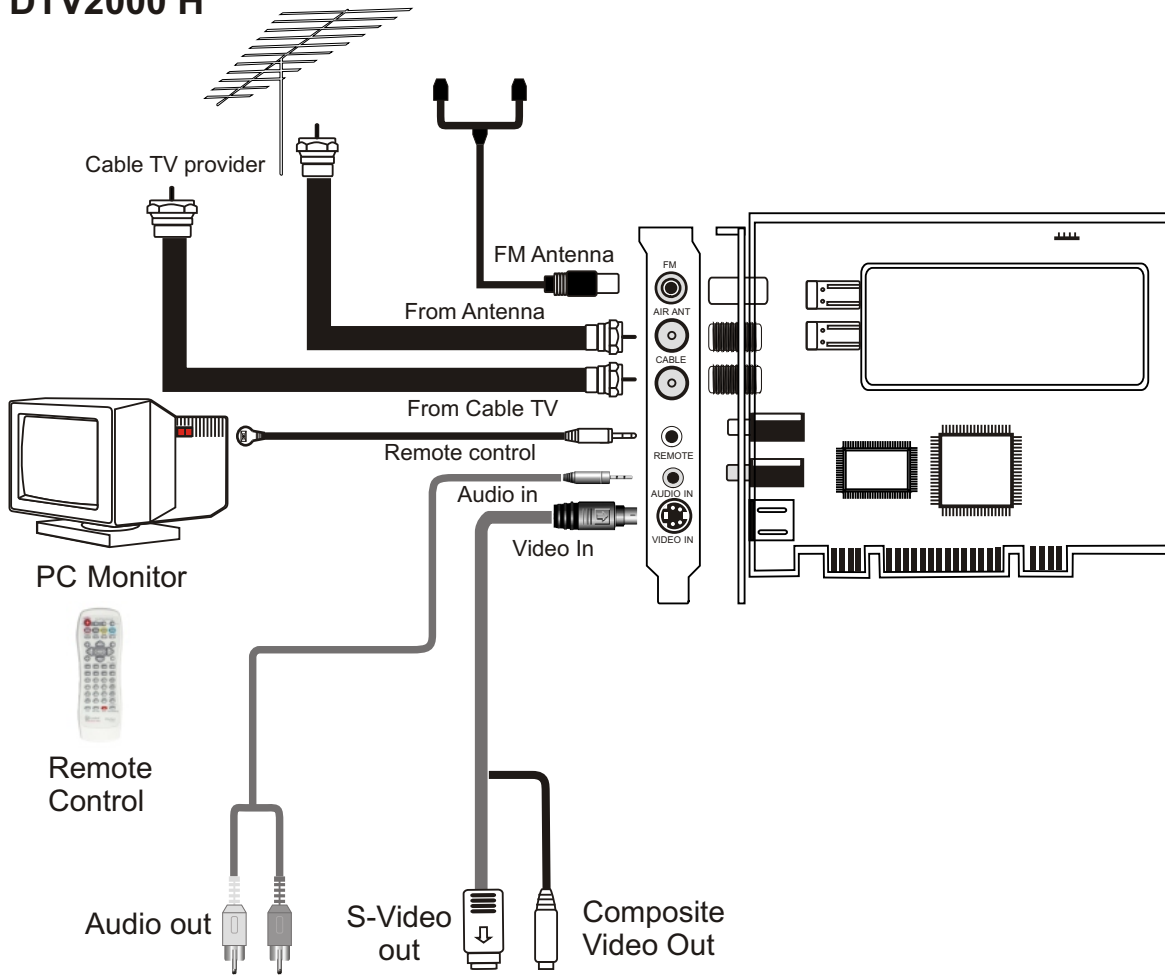
The diagram is for reference only. The actual board appearance may differ from the diagrams.

 If you are using an active antenna, please set the jumper, as circled in the photo to the right, to the **enabled** position. Otherwise, please leave it at the **disabled** position (default).



Board Layout

DTV2000 H

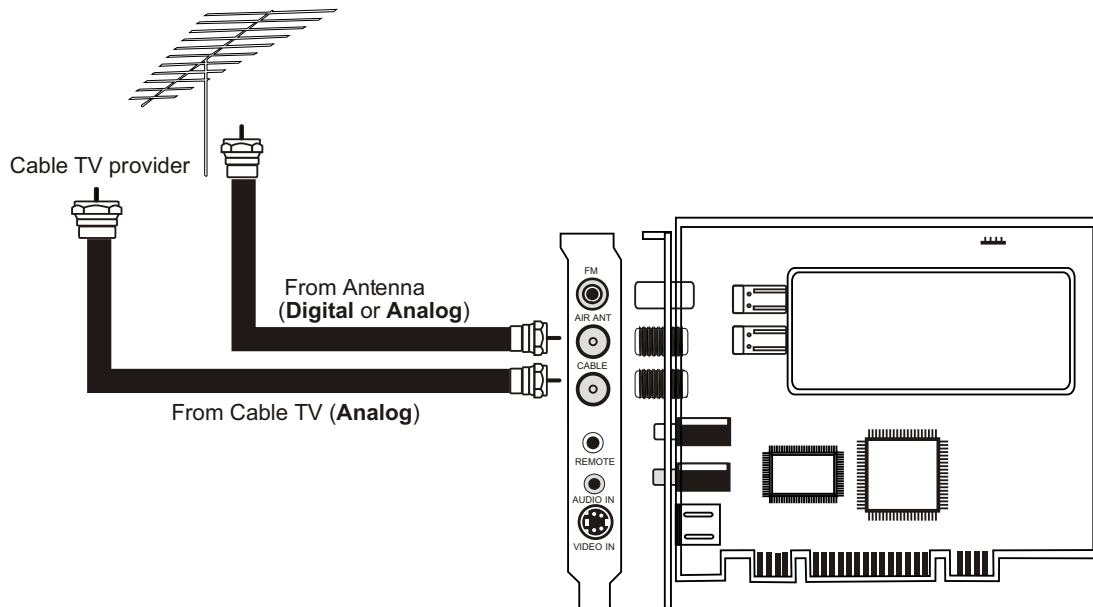


Note:

1. The diagram is for reference only. The actual board appearance may differ from the diagrams.
2. **FM and Remote Control functions are optional.** Please refer to the descriptions on the retail box for detailed product specifications.

Board Layout

Below is a detailed descriptions on the connecting devices of WinFast DTV2000 H.



Note:

For **Antenna**: It can be connected to both *digital* and *analog* TV signal.

For **Cable TV**: Only *analog* TV signal can be received by the cable (***Digital cable TV signal is not supported***).

- (1) If you have an antenna (digital) and a cable (analog), please connect the antenna to an antenna connector, and cable to a cable TV connector.
- (2) If you have only cable (analog), please connect it to the cable connector.
- (3) If you have a VHF/UHF antenna that covers all local digital/analog channels, please connect it to the antenna connector in order to switch between digital and analog TV. An example of this is seen in Australia.

Hardware Installation

Step 1:

Power off your PC. Open the computer case. Remove the coverplate of an unused expansion slot.

Step 2:

Align the bus on the card with the PCI slot.

Step 3:

Gently press the WinFast TV device down into the slot until you feel the edge of the bus reaches the bottom of the PCI slot. Note that the capture card can be inserted into PCI slot in one direction only.

Step 4:

Secure the bracket of the card to your computer case with the screws. Then fit the computer case cover back in place.

Step 5:

Connect the input sources and output devices to your capture card following the instructions given in ***Connect Input and Output Devices*** section on the next page. Now you are ready to connect the video sources to your capture card.

Driver & Application Installation

Step 1:

Turn on your PC and start up the Windows.

Step 2:

Shortly after entering the Windows , you will see the **Found New Hardware Wizard** dialog box. Click **"Cancel"**.

Step 3:

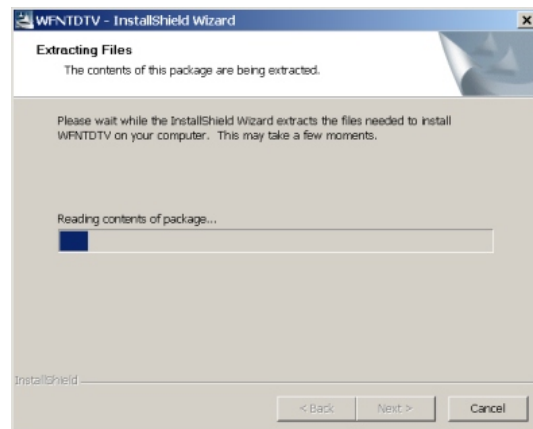
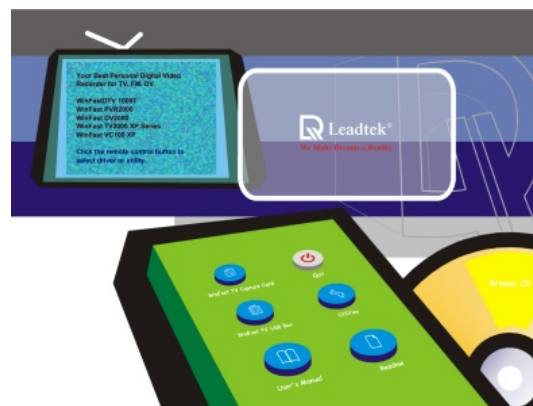
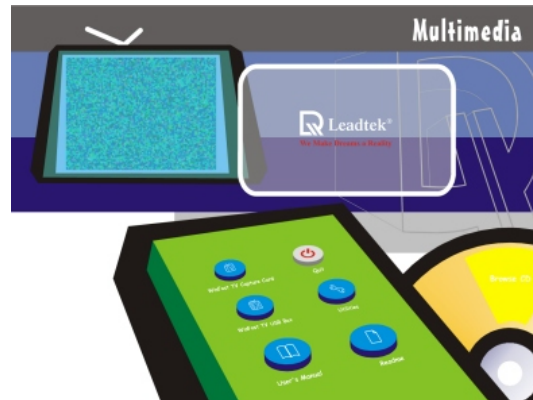
Insert the Multimedia Software CD into your CD-ROM drive. Autorun will start and the menu screen will appear as the figure shown to the right. Click the button marked **WinFast TV Capture Card** on the virtual remote control.

Step 4:

Click on the **Driver** item to begin the installation.

Step 5:

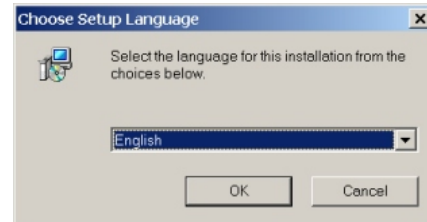
The wizard is extracting the files needed for the installation. There is a progress bar indicating the status.



Driver & Application Installation

Step 6:

You have to choose a language for the installation. Make the selection and click **OK**.



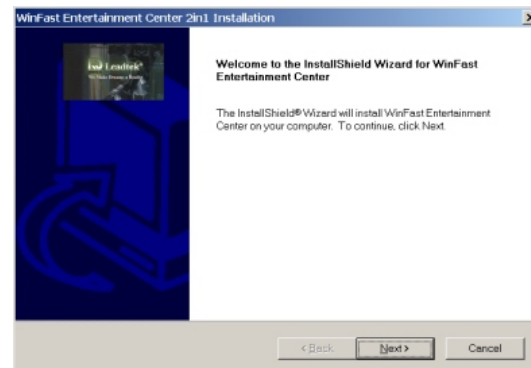
Step 7:

The wizard is ready to install the **WinFast Entertainment Center**.



Step 8:

The installation is going to start. Click **Next**.



Step 9:

The wizard will install the software for the hardware. Check "Install the software automatically (Recommended)" and **Next**.



Driver & Application Installation

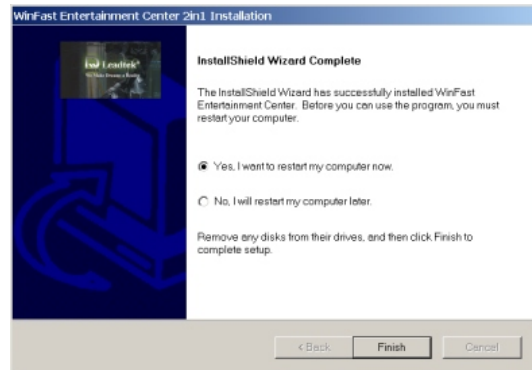
Step 10:

The wizard has finished installing the software. Click **Finish**.



Step 11:

You have to restart your computer. Click **Finish** to reboot.



Step 12:

After reboot, the wizard will take care of the rest of the installation process.

Step 13:

The entire installation is completed. Now you are able to use **WinFast DTV1000 T/DTV2000 H TV Card**. Get ready for the high quality digital TV programs on your computer.

Recycling Information



Thank you for choosing this Leadtek product.

WinFast TV Device is an electronic device which may contain hazardous materials/components which need to be disposed of properly at the end of the product's life. You can help avoid hazardous risks by not disposing of the electronic device in your normal domestic waste. Electric and electronic devices are marked with a rubbish bin with a diagonal line through it, which indicates that these products should not be thrown out with usual domestic waste. If such products are disposed of together with domestic waste, electric and electronic equipment may have severe impacts on the environment as well as on human health, not least because of the potentially hazardous materials.

Pursuant to the ElektroG, Leadtek provides an easy and convenient way of recycling electric and electronic equipment. Please dispose of your electric and electronic equipment at your local collection site specially designated for this type of waste. Such disposal is free-of-charge to you. Together with the management of the local collection site, Leadtek will then take care of the efficient recycling and treatment of the electric and electronic waste.